

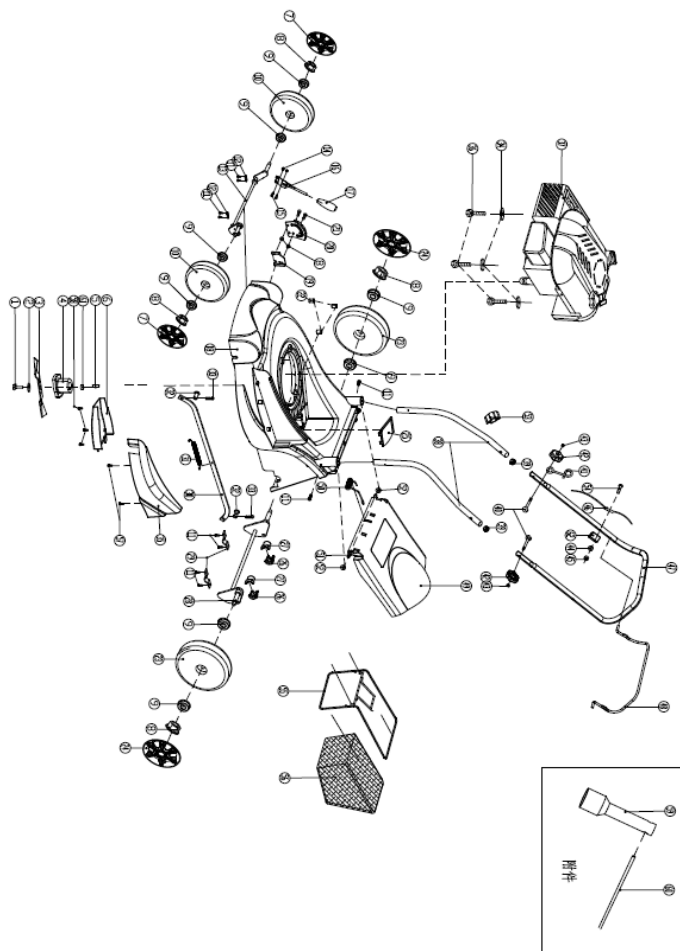


CAMON®

OUTDOOR POWER EQUIPMENT

CORTACÉSPED CAMON DYM 1661FB

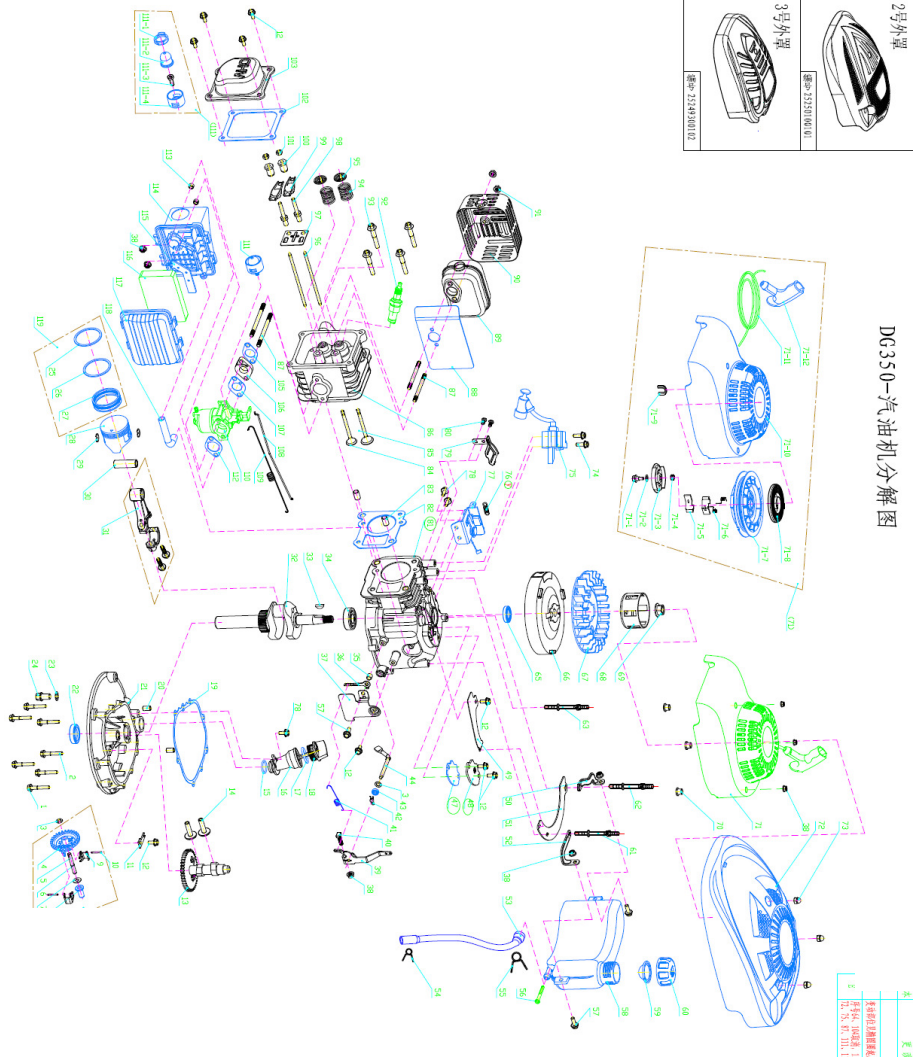
| NºFig | Referencia | Descripción(en) | Nº(pcs) |
|-------|-----------------|-----------------------------|---------|
| 1 | A26800606201 | bolt | 1 |
| 2 | 2105300001C | dishing washer | 1 |
| 3 | 2105200030F | blade | 1 |
| 4 | 2105300030A | blade support | 1 |
| 5 | A26809000201A | flat key | 1 |
| 6 | 21041000810001A | belt protecting cover | 1 |
| 7 | 21011000090146A | wheel cover-4 | 2 |
| 8 | A26800502801 | lock nut | 6 |
| 9 | 21021000153201A | bearing | 8 |
| 10 | 21011000080001D | wheel | 2 |
| 11 | A26800104601A | self-tapping screw | 10 |
| 12 | 2109200031A | front axle plate | 2 |
| 13 | 2109200031A | front axle assembly | 1 |
| 14 | A26800501101 | lock nut | 2 |
| 15 | A26800202902 | trigger screw | 2 |
| 16 | 2106200130C | handle assy | 1 |
| 17 | 21021000010001A | handle sheath | 1 |
| 18 | 21031000200002C | main case | 1 |
| 19 | 2109200033A | main case press plate | 1 |
| 20 | 2106200122B | height adjustment board | 1 |
| 21 | 3091304004 | bolt | 2 |
| 22 | 2102200017B | deck axle sheath | 3 |
| 23 | 21011000140001B | wheel | 2 |
| 24 | 21011000150146A | wheel cover-4 | 2 |
| 25 | 21031000220002N | deck cover | 1 |
| 26 | 21061000683201A | axle sheath upper plate | 2 |
| 27 | 21061000693201N | axle sheath lower plate | 2 |
| 28 | 2101500054B | rear axle assembly | 1 |
| 29 | 2109200032A | rear axle plate | 1 |
| 30 | 2106200121B | plastic deck connecting rod | 1 |
| 31 | 2109800038A | connecting rod spring | 1 |
| 32 | A26809002001 | pin | 1 |
| 33 | A26809003801 | open plug | 1 |
| 34 | A26800700201 | big washer | 3 |
| 35 | 21031000210002N | decksider cover | 1 |
| 36 | A26800601601 | bolt | 3 |
| 37 | 60400104102 | engine | 1 |
| 38 | 2106200395A | lengthen the handle | 2 |
| 39 | 2106100003A | pipe plug | 2 |
| 40 | A26800601202A | bolt | 2 |
| 41 | 2106300023B | cable hook | 1 |
| 42 | 21061000020001B | lower handle knob | 2 |
| 43 | A26800502301A | nut | 2 |
| 44 | A26800700801 | flat washer | 1 |
| 45 | A26800501603A | lid shape nut | 1 |
| 46 | 2106800001A | flameout cable ass'y | 1 |
| 47 | 21062003820001A | upper handle | 1 |
| 48 | 21063000590001N | flameout pole | 1 |
| 49 | 21041002030001B | rear cover plate | 1 |
| 50 | 2102300004B | torsional spring | 1 |
| 51 | 2103300011B | axle | 1 |
| 52 | 2109900030B | bearing clip | 2 |
| 53 | 21061000013201A | cable clip | 1 |
| 54 | 3091307003 | bolt | 1 |
| 55 | 2107200032A | grass catcher bracket | 1 |
| 56 | 21077000572188B | grass catcher | 1 |
| 57 | A26800104801 | self-tapping screw | 2 |
| 58 | A26800103202 | self-tapping screw | 3 |
| 59 | 2012200002A | wrench | 1 |
| 60 | 2012100004A | wrench pole | 1 |
| 61 | 2105400025A | blade support sheath | 1 |
| 62 | 21061000043201A | cable fixing plate | 1 |



附件

MOTOR DG350 CORTACÉSPED CAMON DYM 1661FB

| NºFig. | Referencia | Descripción | Nº(pcs) |
|--------|-----------------|---|---------|
| 1 | 3091307003 | hexagonal flange bolt | 6 |
| 2 | 3091307004 | hexagonal flange bolt | 1 |
| 3 | A26800702101 | washer | 2 |
| 4 | 2032100017A | speed adjustment gear | 1 |
| 5 | 2032300079B | speed adjustment gear shaft | 1 |
| 6 | A26800900701 | shaft steelwire block ring | 1 |
| 7 | A26800703201 | flat washer | 1 |
| 8 | 2032100002B | slide sheath | 1 |
| 9 | 2032300070A | flyweight | 2 |
| 10 | A26809003401 | flyweight pins | 2 |
| 11 | 2033200018B | press board | 1 |
| 12 | A26800604101 | hexagonal flange bolt | 9 |
| 13 | 20331300036B | nylon camshaft ass'y | 1 |
| 14 | 2031300083B | tappet valve | 2 |
| 15 | 2039600019N | O type ring | 1 |
| 16 | 20351000753201A | oil adding pipe | 1 |
| 17 | 2031600011 | O type ring | 1 |
| 18 | 20351000770031A | oil dipster (patente 123C yellow) | 1 |
| 19 | 2032600015B | cylinder sealing gasket | 1 |
| 20 | A26809003501 | position fixed pin | 2 |
| 21 | 2031400051A | cylinder cover | 1 |
| 22 | 2031600060N | oil sealing | 1 |
| 23 | 2031300007A | drain plug washer | 1 |
| 24 | 203130006A | oil drain plug | 1 |
| 25 | 2032300066A | piston ring1 | 1 |
| 26 | 2032300067A | piston ring2 | 1 |
| 27 | 2032300068A | assembly oil ring | 1 |
| 28 | 2032400023A | piston | 1 |
| 29 | 2033800023A | piston pin clip spring | 2 |
| 30 | 2032300078C | piston pin | 1 |
| 31 | 2032400029F | connecting rod ass'y | 1 |
| 32 | 2032300020B | crankshaft ass'y | 1 |
| 33 | A26809003901 | semicircle key | 1 |
| 34 | A26800401101 | ball bearing 5203/P63 | 1 |
| 35 | 2036400002A | air filter sheath | 1 |
| 36 | 2031300062A | spring board | 1 |
| 37 | 2032300069A | speed adjustment fixing board | 1 |
| 38 | A26800501901 | hexagonal flange nut | 8 |
| 39 | 2031300063N | speed adjustment rocker | 1 |
| 40 | 2031300012A | speed adjustment screw | 1 |
| 41 | 2031800015A | speed adjustment spring | 1 |
| 42 | 2031200007A | spring open pin | 1 |
| 43 | 2031600029N | oil sealing | 1 |
| 44 | 2032300080B | speed adjustment rod | 1 |
| 45 | 2031300075A | filter plate | 1 |
| 46 | 2035100043A | breathing valve-sphre | 1 |
| 47 | 2031600051A | breathing sealing washer | 1 |
| 48 | 2031300067A | breathing cover board ass'y | 1 |
| 49 | 2031300046A | protecting board 2 | 1 |
| 50 | 2035200019A | left fuel tank bracket | 1 |
| 51 | 2035200021B | gasoline tank bracket | 1 |
| 52 | 2035200020A | right fuel tank bracket | 1 |
| 53 | 2035600024A | fuel hose | 1 |
| 54 | 2035200035A | fuel hose clamp B | 1 |
| 55 | 2035200034A | fuel hose clamp A | 1 |
| 56 | 2035100003A | fuel filter | 1 |
| 57 | 3091307001 | hexagonal flange bolt | 3 |
| 58 | 2035100097D | fuel tank | 1 |
| 59 | 2035600020A | fuel tank sealing washer | 1 |
| 60 | 20351000733201A | fuel tank cap | 1 |
| 61 | A26800617701 | double head screw B | 1 |
| 62 | 2031300009A | double head screw C | 1 |
| 63 | A26800617601 | double head screw A | 1 |
| 64 | A26800502201 | hexagonal bolt | 6 |
| 65 | 2031600031N | oil sealing | 1 |
| 66 | 2038400015E | flywheel ass'y | 1 |
| 67 | 20321000180001A | fan | 1 |
| 68 | 2032100012C | passive tray | 1 |
| 69 | 2032303001 | hexagonal flange bolt | 1 |
| 70 | 2033300012A | wind-guiding sheath | 3 |
| 71 | 2030200015N | starter ass'y | 1 |
| 71-1 | A26800610401 | fixed bolt | 1 |
| 71-2 | A26800704702 | washer | 1 |
| 71-3 | 2033200014B | pressing plate | 1 |
| 71-4 | 2033800014A | pressing spring | 1 |
| 71-5 | 2033200015E | pulling mechanism | 2 |
| 71-6 | 2039800013A | spring | 2 |
| 71-7 | 20331000220001A | starter wheel | 1 |
| 71-8 | 203380016A | recoil spring | 1 |
| 71-9 | 2033300011N | starter cover clip ring | 1 |
| 71-10 | 2030200015N | starter big shell | 1 |
| 71-11 | 2039800025D | starter rope | 1 |
| 71-12 | 20331000010001B | handle | 1 |
| 72 | 20341000230001B | engine cover | 1 |
| 73 | A26800501603A | lid shape nut | 3 |
| 74 | A26800612201 | hexagonal flange bolt | 2 |
| 75 | 2038900018N | ignition ass'y | 1 |
| 76 | 2039800018A | controller spring(for steel deck) | 1 |
| 77 | 2031300036B | brake controller ass'y | 1 |
| 78 | A26800612201 | hexagonal flange bolt | 1 |
| 79 | 2031300045A | protecting board 1 | 1 |
| 80 | A26800201002 | tooth screw | 2 |
| 81 | 2031400050C | cylinder ass'y | 1 |
| 82 | 2031600026A | cylinder head gasket | 1 |
| 83 | 2031400011B | position fixed pin | 2 |
| 84 | 2037300014A | exhaust valve | 1 |
| 85 | 2036300022A | intake valve | 1 |
| 86 | 2031400043C | cylinder head ass'y | 4 |
| 87 | A26800610103 | carburetor bolt | 1 |
| 88 | 2037200019A | cylinder sealing washer | 1 |
| 89 | 2037500019N | muffler ass'y | 1 |
| 90 | 2037200015A | muffler guard ass'y | 1 |
| 91 | 3032306001 | hexagonal flange locking nut | 2 |
| 92 | 2038900015B | spark plug F7RTC | 1 |
| 93 | A26800605001 | hexagonal flange bolt | 4 |
| 94 | 2036800015A | valve spring | 2 |
| 95 | 2036200026C | valve spring retainer | 2 |
| 96 | 2036200019B | pushing rod ass'y | 2 |
| 97 | 2036200020B | pushing rod guide plate | 1 |
| 98 | 2031300002C | adjustment bolt | 2 |
| 99 | 2036300015C | rocker arm | 2 |
| 100 | A26800503901 | adjustment nut | 2 |
| 101 | A26800504001 | lock nut | 2 |
| 102 | 2031600027A | cylinder head cover gasket | 1 |
| 103 | 2031200020B | cylinder head cover | 1 |
| 104 | A26800610103 | carburetor bolt | 1 |
| 105 | 2036600014A | cylinder head and intake sealing gasket | 1 |
| 106 | 2036100020B | intake hose | 1 |
| 107 | 2036600012A | carburetor and intake hose sealing gasket | 1 |
| 108 | 2035300012A | throttle valve pushing pole | 1 |
| 109 | 2035800015A | throttle pulling spring | 1 |
| 110 | 2036400024C | carburetor ass'y | 1 |
| 111 | 2030X00060 | primer bulb ass'y | 1 |
| 111-1 | 20361000330001A | adding bulb seat | 1 |
| 111-2 | 2036600015B | primer bulb | 1 |
| 111-3 | A26800612401 | ventilation bolt | 1 |
| 111-4 | 20351000780001A | primer bulb body | 1 |
| 112 | 2036600013A | carburetor and air filter sealing gasket | 1 |
| 113 | 2031300008B | air filter sheath | 2 |
| 114 | 20361000290001B | air filter base | 1 |
| 115 | 20361000300001A | air filter inner cover | 1 |
| 116 | 2036900016A | foam core | 1 |
| 117 | 20361000280001A | air filter upper cover | 1 |
| 118 | 2031600025C | ventilation hose | 1 |
| 119 | 2032300030N | piston ring ass'y | 1 |
| 120 | 2032300040B | speed adjustment gear ass'y | 1 |



DG350-汽油机分解图

